



Aficio™ SP C820/821DN

The ultimate
in colour printing



RICOH



Exceptional colour for powerful communications

If you want to empower your business with professional-looking colour documents, look no further. Ricoh's colour flagships Aficio™SP C820/821DN offer the best of both worlds: superb image quality at leading output speeds. Produce stunning newsletters, direct mailouts and reports in-house in a matter of minutes! Offering all the functionality of a top class professional device, the SP C820/821DN represent the ideal cost saving alternative to outsourcing print jobs.

Increased Productivity

Real-life office needs call for solutions that bundle maximum performance and cost efficiency, now and in the long run. As the top models in Ricoh's line-up of colour print solutions, the SP C820/821DN meet every possible demand. Compatible with most networks and backed by monitoring, management and cost accounting solutions, these colour units stand for seamless connectivity and reduced network loads.



2 x 550-sheet paper trays

2,000-sheet large capacity paper tray

1 by

Create Documents with Impact

- Superb colour registration and 4 bit output resolution
- Remarkably sharp image quality thanks to PxP™ toner and multi-bit printer engine
- Extensive finishings: stapling, punching and booklet creation

Print on Heavy Stock

Brochures, newsletters, reports, cover pages for manuals... the SP C820/821DN allow you to create documents exactly the way you imagined them. For special applications you can use paper up to 256gsm.

SP C820DN



34 seconds
Warm up time



9 seconds
First print output



40 pages per minute
Print speed

SP C821DN



48 seconds
Warm up time



8 seconds
First print output



50 pages per minute
Print speed

Speed up your Document Flow

Even the toughest deadlines shouldn't worry you: use the SP C820/821DN to accelerate your workflow

- Short warm up time: less than 60 seconds
- First print ready in under 8 seconds for SP C821DN and 9 seconds for the SP C820DN
- Continuous colour and B/W output: 40ppm - SP C820DN
50ppm - SP C821DN
- Duplex printing at virtually the same speed as single-sided printing
- Long print runs in one go: up to 3,200 sheets paper capacity

Safeguard your Information

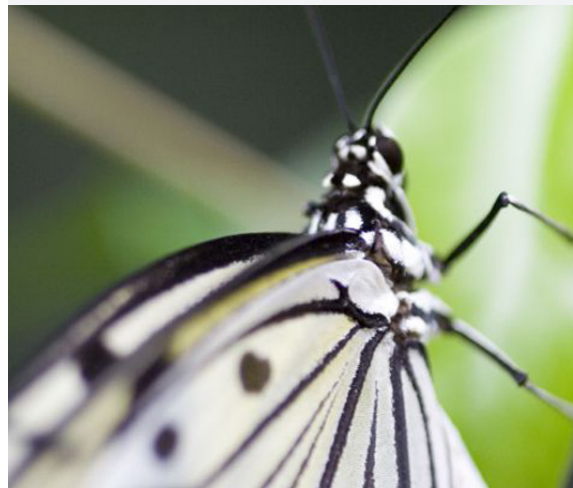
- Data encryption to secure confidential information
- Advanced authentication and controlled access capabilities
- Erasing and overwriting of temporary data on HDD
- Unauthorised copy prevention with watermark protection

100-sheet
bypass tray



Easy to Operate for Any User

- Straightforward 4 line LCD operation panel
- Easy handling paper tray
- Simple and fast supply maintenance thanks to full front access



Ricoh's Green Commitment

The Aficio™ SP C820/821DN reflect Ricoh's commitment to the environment with the usage of toxic free materials* and minimal ozone and noise emission levels. Low power consumption, clean and quiet operation, as well as standard duplexing all contribute to sustainable business.

* In compliance with EU RoHS directive (RoHS: Restriction of Hazardous Substances, effective from July 2006).





Specifications

General

Technology:	4 drums tandem method laser beam scanning electro photographic printing dual component toner development double sided (duplex) printing
Continuous print speed	
SP C820DN:	Colour & B&W: 40ppm
SP C821DN:	Colour & B&W: 50ppm
Warm up time:	
SP C820DN:	34 seconds
SP C821DN:	48 seconds
First print speed:	
SP C820DN	Black-and-white: Less than 8 seconds Full colour: Less than 9 seconds
SP C821DN	Black-and-white: Less than 7 seconds Full colour: Less than 8 seconds
Dimensions (W x D x H):	670 x 670 x 640 mm
Weight:	Less than 97 kg
Power source:	220 – 240 V, 50/60 Hz
Power consumption:	
Maximum:	Less than 1.4 kW
Energy saver mode:	Less than 2.7 W
Duty cycle:	200,000 prints per month

Controller

Processor:	
SP C820DN:	Celeron-M 600MHz
SP C821DN:	Celeron-M 1GHz
Printer language/ resolution	
PCL5c:	600 x 600 dpi
PCL6:	1200 x 1200 dpi
Adobe® PostScript® 3™:	1200 x 1200 dpi
RPCS™:	1200 x 1200 dpi
Memory:	
Standard:	512 MB
Maximum:	1024 MB
Hard Disk Drive: (Standard on SP C821DN)	80 GB
Drivers:	
PCL5c/PCL6/RPCS™:	Windows® 2000/XP/ Server 2003/Server 2008/Vista
Adobe® PostScript® 3™:	Windows® 2000/XP/ Server 2003/Server 2008/Vista Macintosh 8.6 – 9.2.x (OS X Classic) Macintosh X v10.1 or later (native mode) UNIX
Fonts:	
PCL5c/PCL6:	45 intelli fonts 13 fonts (International Font)
Adobe® PostScript® 3™:	136 Adobe® fonts

Security:

Network data security: Printing data encryption via IPP

Connectivity

Network protocol:	TCP/IP, IPX/SPX, AppleTalk
Supported networks:	Windows® 2000/XP/Server 2003/ Server 2008/Vista Mac OS 8.6 – 9.2.x Macintosh X v10.1 or later (native mode) Novell® NetWare® 3.12/3.2/4.1/4.11/5.0/5.1/6/6.5 UNIX (using Ricoh UNIX filter)
Interface:	
Standard:	Ethernet 10- base-T/100 base-TX USB 2.0 USB Host Interface
Option:	Bi-directional (IEEE 1284) Wireless LAN (IEEE 802.11b) Bluetooth Gigabit Ethernet
Additional feature:	PDF Direct Print

Software Solutions

Standard:	DeskTopBinder™ Lite SmartDeviceMonitor™ for Admin/Client Web Image Monitor Printer utility for Mac Font Manager 2000
Option:	Document Management utilities & professional software solutions Web SmartDeviceMonitor™

Paper Handling

Paper input capacity:	
Standard:	2 x 550-sheet paper tray** 1 x 100-sheet bypass tray**
Maximum:	3,200 sheets**
Paper output capacity:	
Standard:	500 sheets face down**
Maximum:	4,000 sheets**
Paper Size:	A3 wide, A3, B4, A4, B5, A5, B6, A6
Paper Weight:	
Paper Trays:	60 – 256gsm
Bypass Tray:	60 – 256gsm
Duplex Tray:	60 – 169gsm
Media:	Plain paper, thick paper, thin paper, recycled paper, transparencies laser printer labels, envelopes

Consumables

Toner:	
Black:	20,000 sheets*
C,M,Y:	15,000 sheets*
The Aficio™SP C820/821DN ship with a starter toner kit	
Black:	10,000 sheets*
C,M,Y:	8,000 sheets*

Options

Internal options:	256/512 MB SDRAM DIMM Bi-directional (IEEE 1284) Wireless LAN (IEEE 802.11b) Bluetooth Gigabit Ethernet Camera Direct Print Card (PictBridge I/F) 80GB Hard Disk Drive (For SP C820DN only) HDD Data Overwrite Security Unit HDD Data Encryption Unit
External options:	1 x 550 sheet paper tray, 2 x 550 sheet paper trays, 2,000 sheet large capacity tray, 1,000 sheet booklet finisher, 3,000 sheet finisher, Bridge Unit, Punch Unit (2/4 hole & 3 hole), 4 bin mailbox

* A4 with 5% coverage
** A4 at 80gsm



ISO 14001: Lic C10297
Standards Australia



ISO 9001: Lic QEC3297
Standards Australia



All brand and/or product names are trademarks of their respective owners.

Specifications and external appearance are subject to change without notice.

Product code: 950199

RICOH

